

# FocusLink® Secure Connectivity

## Order Entry and Results Reporting for All Focus Diagnostics Referral Testing

FocusLink® is now easier than ever, offering smart design features and tools defined by real users in busy laboratories. New and experienced users alike will appreciate the intuitive, modular design that puts everything you need right at your fingertips. Simple to configure, FocusLink® is flexible to fit your laboratory's workload today and tomorrow.

### FocusLink® User Features

#### Ease of Use:

- Logical and intuitive modular design developed from 2 decades of real-time usage in healthcare settings nationwide
- Primary-use screens provide instant access to accessory information through drop-down menus and mini-screens
- Page-specific online help — not just an index of help text

#### Security:

- Designed to comply with HIPAA regulations
- Defineable user roles permit password access to different software areas based on job responsibility
- Secure Internet connections utilizing industry standard 128-bit encryption

#### Flexibility:

- User-defined search criteria for patient results
- Graphical user interface to customize start-up screen and other user preferences
- Print or reprint reports at any time

#### Online Ordering:

- Barcode label printing for specimen tubes
- Online test information available when ordering (i.e. specimen type, amount, transport temperature, etc.)
- Single order entry screen for new patients minimizes data entry time
- Printable manifest for batch send-outs simplifies result tracking
- Directory of Services available for test search

#### Online Reporting:

- Reports available as soon as they are resultated
- Results stored in a Clinical Data Repository for easy recall
- Test utilization reporting available
- Flexible page views, searches, and sorting features
- Historical reporting function available



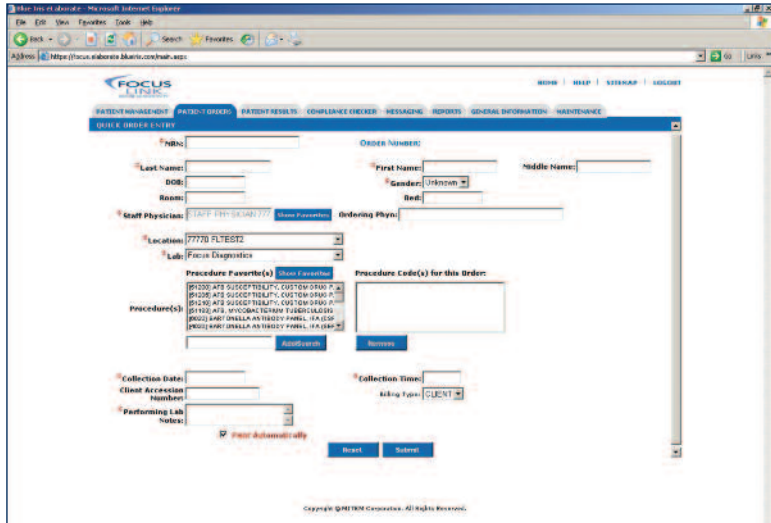
*Designed for real users in busy laboratories – all the information you need right at your fingertips.*

*FocusConnect™ Suite of Connectivity Solutions*

The source for infectious disease diagnostic solutions



FocusLink's modular design places related functions at the user's fingertips, with convenient access to information via drop-down menus and pop-up screens. The search functions in FocusLink® provide flexible parameters for locating and displaying patient orders and results.



## System Requirements

Standard desktop computer workstation, Pentium or above.

	Minimum	Recommended
System	Pentium	Pentium
Processor	500 mHz	1 GHz
Memory	256 MB	512 MB
Hard Drive	1 GB	2 GB
Operating System	Windows 98	Windows XP Professional
Browser	Internet Explorer 6.0	Internet Explorer 6.0

All Focus connectivity solutions are designed to comply with HIPAA regulations.

Please contact your Focus Account Manager to learn more about FocusLink® or other connectivity options from Focus Diagnostics.

**800-445-0185** or **714-220-1900**

[www.focusdx.com](http://www.focusdx.com)

*FocusConnect™ Suite of  
Connectivity Solutions*



Focus Diagnostics  
Cypress, California USA

©Copyright Focus Diagnostics, Inc. 2009  
RLCFL0309